

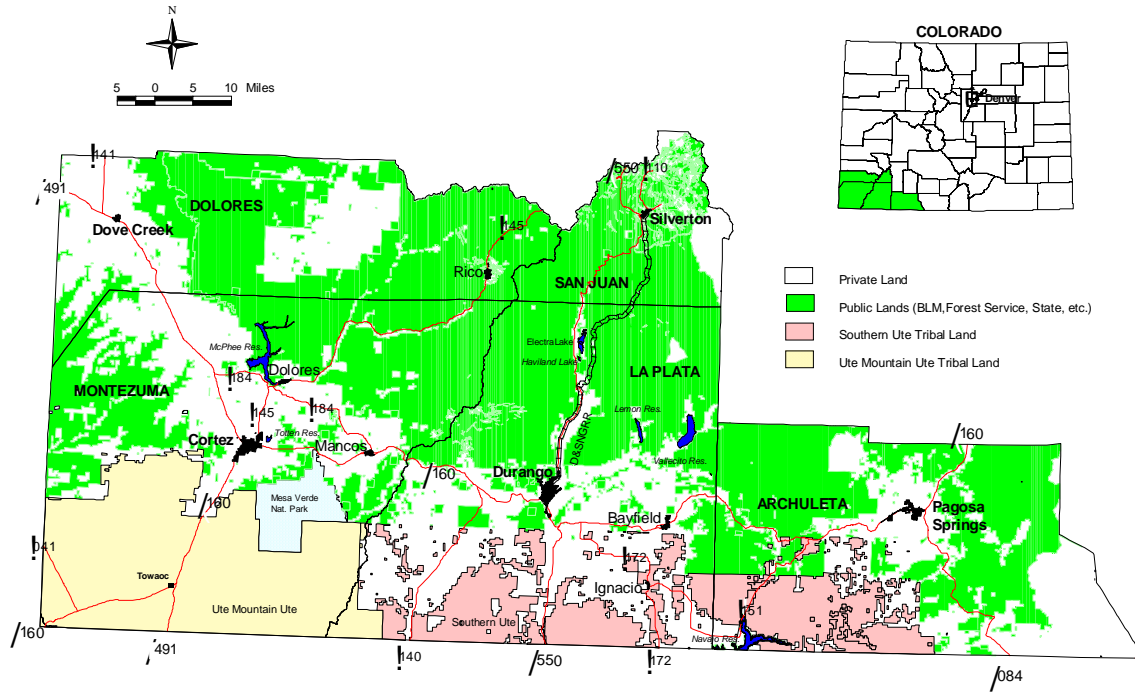


## **SOUTHWEST ENTERPRISE ZONE**

### **2008 ANNUAL REPORT**

## Table of Contents

Overview .....	1
2008 Observations and Data .....	2
2008 Efforts to Improve Conditions .....	3
2008 Objectives .....	4
Attachments .....	7



Region 9

## OVERVIEW

Region 9 Economic Development District of Southwest Colorado Inc. (Region 9 or the District), is a nonprofit, 501 (c) 6 public private partnership that promotes and coordinates economic development efforts throughout southwest Colorado. Region 9 covers the counties of Archuleta, Montezuma, La Plata, Dolores and San Juan as well as the Ute Mountain Ute and Southern Ute Indian Tribes. Incorporated in 1989, Region 9 is led by a 26-member board of directors, 17 from local governmental jurisdictions and 9 from the private sector. The District coordinates with local and county level economic development organizations to create sound economic development strategies and to develop infrastructure, opportunities and community projects that enable businesses and workers throughout the region to succeed. The District also serves as the Southwest Enterprise Zone administrator.

Sustainable economic development is a high priority for the region. The challenge is to grow our economy in a way that balances the needs of the environment and society with those of economic growth and development. Sustainable economies should be diverse so that one industry's decline does not negatively affect the entire economy. In turn, a well trained workforce is essential to provide the necessary skills to businesses. Enterprise Zones are valuable tools in this business environment.

**Archuleta County** is comprised of 1,364 sq. miles, with only 34% of lands in private ownership. Tribal lands comprise 14.4% of the county and any decisions regarding their development (i.e. mineral and timber resources) could be crucial on county resources and economic development. Most of the northern and eastern portions of the county (51.6%) are within the San Juan National Forest and are under the management of the U.S. Forest Service. Federal lands continue to be managed under a policy of multiple-use. All of Archuleta County is a designated Enterprise Zone, with the exception of the Southern Ute Reservation lands, which have been excluded following the wishes of the Southern Ute Tribal government. Archuleta County is currently listed as an Enhanced Enterprise Zone.

**Dolores County** is comprised of 1,052 sq. miles. Of these 58% are state and federal lands, and 42% are in private ownership. All of Dolores County is a designated Enterprise Zone and meets the criteria of an Enhanced Enterprise Zone.

**La Plata County** is comprised of 1,690 sq. miles. Of these, 41.1% are private lands, 17.8% are tribal lands, and 41.1% are state and federal lands. Open space has been identified as an important asset to La Plata County residents. Therefore, agricultural parcels, as well as some census tracts, within the county have been designated as Enterprise Zones. The Southern Ute Reservation lands have been excluded following the wishes of the Southern Ute Tribal government. In La Plata County, the zone boundaries were amended in 2004 to include the new Mercy Regional Medical Center Site.

**Montezuma County** is comprised of 2,084 sq. miles. Of these, 30% are private lands, 33% are tribal (Ute Mountain Ute), and 37% are state and federal lands. All of Montezuma County is a designated Enterprise Zone, with the exception of the Ute Mountain Sacred area, which has been excluded following the wishes of the Ute Mountain Ute Tribal Government.

**San Juan County** is comprised of 250,880 acres (392 sq. miles). Of these, 12% are private lands and 88% are state and federal lands. All of San Juan County is a designated Enterprise Zone, and meets the criteria of an Enhanced Enterprise Zone.

Tribal populations in the region, the only Tribes in Colorado, include the **Ute Mountain Ute** and the **Southern Ute Indian Tribe**. They are major economic forces with their diversified tribal enterprises and provide employment for tribal members as well as others within the regional community.

## 2008 OBSERVATIONS AND DATA

In Region 9, four of five counties meet economic distress criteria making them eligible as Enterprise Zones (per Statute 39-30 C.R.S). According to this statute, to be designated an Enterprise Zone an area must have a population of less than 80,000 and meet one of the following criteria: an unemployment rate at least 25% above the state average; a population growth rate less than 25% of the state average; and a per capita income (PCI) less than 75% of the state average.

County	2007 Unemp. Rate	2002 - 2007 Pop. Growth	2006 PCI
Archuleta	No	No	Yes
Dolores	Yes	No	Yes
La Plata	No	No	No
Montezuma	No	No	Yes
San Juan	No	Yes	No

Archuleta, Dolores, Montezuma and San Juan Counties are within the guidelines for designated Enterprise Zones. La Plata County no longer meets these criteria on a county wide level, but has certain eligible census tracts that qualify. Archuleta, Dolores and San Juan Counties have also been designated as Enhanced Rural Enterprise Zones for calendar year 2008.

**Unemployment** - Archuleta, La Plata and Montezuma and San Juan Counties no do not meet the unemployment rate criteria for Enterprise Zone status based on unemployment rates for 2007. La Plata County met local Objective 1, of being < or = to the state unemployment rate.

	2007 Unemp. Rate	EZ Eligible > 4.75%	Objective 1 < or = to State
Archuleta	3.9%	No	No
Dolores	5.0%	Yes	No
La Plata	2.8%	No	Yes
Montezuma	4.0%	No	No
San Juan	4.5%	No	No
Colorado	3.8%		

at least 25% above State Avg (3.8%) = 4.75%

Source: Colorado Labor Market Information (1-27-09)

**Population Growth** - San Juan County met EZ eligibility criteria for population growth from 2002 – 2007.

	Estimates		% Change 2002-2007	*EZ Eligible
	2002	2007		
Archuleta	10,912	12,625	15.7%	No
Dolores	1,876	1,937	3.3%	No
La Plata	46,281	49,758	7.5%	No
Montezuma	24,216	25,561	5.6%	No
San Juan	563	571	1.4%	Yes
Colorado	4,521,858	4,919,884	8.8%	

\* < 25% of State (2.2%)

Source: Colorado Demography Section estimates 10-08

**Per Capita Income (PCI)** - Archuleta, Dolores and Montezuma Counties met eligibility criterion for PCI in 2006, our latest numbers available; La Plata and San Juan Counties did not meet this criterion. None of the counties met local Objective 2, of being > or = to the state PCI.

County	2006 Per Capita Income		* EZ Eligible < \$29,618	Objective 2 > or = to State PCI
	PCI	% of State		
Archuleta	\$ 25,145	64%	Yes	No
Dolores	\$ 25,347	64%	Yes	No
La Plata	\$ 36,493	92%	No	No
Montezuma	\$ 28,547	72%	Yes	No
San Juan	\$ 30,096	76%	No	No
Colorado	\$ 39,491			

\*75% of State PCPI= \$29,618

Source: Bureau of Economic Analysis

## 2008 EFFORTS TO IMPROVE CONDITIONS

Region-wide in 2008 there were 30 projects approved as Enterprise Zone Contribution projects, and these projects generated \$5,691,494.04 in economic activity through direct and in kind contributions. Businesses in Enterprise Zone areas claimed \$56,474,008 in eligible investments, resulting in \$1,818,843 in certified tax credits, and created 317 jobs.

Region 9 works with the county-level economic development groups to devise strategies for attracting suitable new businesses and helping existing businesses to grow. These strategies include educating local businesses about the benefits and programs of the Enterprise Zone. Efforts include: newspaper articles on the EZ; presentations; monthly updates to the Region 9 Board of Directors; an annual training for local accountants, business owners and contribution projects about EZ benefits and eligibility criteria; and the addition of detailed EZ maps to the Region 9 website at [www.scan.org](http://www.scan.org).

In 2009, further efforts will include working with the local economic development groups to identify vacant buildings in commercial areas that may be eligible for the Rehabilitation Credit; a direct mailing of postcards to all eligible businesses that are not already participating in the EZ programs; and scheduling an EZ information meeting in each county/community for small businesses.

2008 Highlights include:

- Received approval for \$627,480 in new Community Development Block Grant funds available to lend.
- The San Juan BioEnergy Facility in Dove Creek, Dolores County opened in December 2008. Region 9 facilitated Community Development Block Grant (CDBG) funds for a feasibility study to the San Juan Biodiesel Facility in 2006 and a business loan for this new company that is already providing five new jobs in the community.
- In 2007, the USDA approved \$250,000 to Region 9 for the Intermediary Re-lending Program to help with lower risk loans that don't meet guidelines for the CDBG listed above.
- In recognition of air quality concerns to the regional economic well-being, Region 9 sponsored a Train Smoke Mitigation Feasibility Study in 2006. This study explored ways to reduce air pollution caused by the coal burning narrow gauge railroad (D&SNGRR), by using locally available alternative fuel sources. The results implemented in 2007, included using wood pellets, and looking at a scrubber system to clean smoke coming from engines in the roundhouse. The Task Force continues to meet monthly on this issue and is currently working on an application to fund an engineering study for a scrubber system.
- The facilitation of a \$500,000 partnership of the Colorado Office of Economic Development (OEDIT) and the Town of Pagosa Springs (in Archuleta County) to build a new facility for Parelli Natural Horsemanship, which will create 25 new jobs through 2010. In terms of economic development, Parelli Natural Horse-Man-Ship is a "Direct Base Economic Activity" with its revenue coming from sources outside the local economy. In addition to the new high paying jobs that will be created in Archuleta County, clients will come from all over the world to Pagosa Springs to attend training and events at the new facility, enhancing and diversifying the tourism economy.
- Received approval from Colorado Economic Development Commission for three new EZ Contribution Projects (Housing Solutions for the Southwest, Cornerstone Radio Project, and Durango Arts Center, bringing the Southwest Colorado total to 30.
- Grew Region 9's Business Loan Fund by 10%.
- Closed 26 loans totaling \$1,708,374.
- Assisted businesses to create 60 new jobs, **not** including jobs counted through Enterprise Zone Business Tax Credits.

- Received \$30,000 grant from the Economic Development Association for the Growth Company Initiative that targets local growth companies, defined as companies with a desire and feasibility to grow quickly, a strong competitive advantage, innovative products or services, defensible technology, skilled employees or processes, and serve markets outside the local economy. The District was recognized with an Innovation Award from the National Association of Development Organizations (NADO) for this effort.
- Received approval for \$28,000 in CDOT funds for regional transit study that will begin in 2009.
- Distributed \$10,000 of Enterprise Zone Marketing Funds.
- Coordinating monthly luncheon for regional county/city managers/administrators.
- Completed Southwest Colorado Index ~ Data & Trends that provides information about the overall health of our communities and whether the region is headed forward or backward, improving or deteriorating. Sections included in the *Index* are: demographics, economy, healthcare, arts, culture, transportation, livable wages, civic participation, community safety, housing, education, environment, energy and conservation.
- Completed La Plata County Economic Driver's Study. This study is actually Phase III of the regional 2<sup>nd</sup> Home study, first released in 2006. Phase III looks at the impacts of second homes as well as other economic drivers in the La Plata County Economy. Driver studies will be conducted in Archuleta and Montezuma Counties in 2009.
- Completed 2035 Regional Transportation Plan and Southwest Transit and Health & Human Services Plan.
- .

## 2008 OBJECTIVES

A number of local objectives have been identified, and are being tracked on an annual basis.

**1: Unemployment rates for each of the counties should be equal to or less than the state unemployment rate. Current Status** – Archuleta, Dolores, Montezuma and San Juan Counties had higher unemployment rates than the state average in 2007.

	2007 Unemp. Rate	EZ Eligible > 4.75%	Objective 1 < or = to State
Archuleta	3.9%	No	No
Dolores	5.0%	Yes	No
La Plata	2.8%	No	Yes
Montezuma	4.0%	No	No
San Juan	4.5%	No	No
Colorado	3.8%		

at least 25% above State Avg (3.8%) = 4.75%

Source: Colorado Labor Market Information (1-27-09)

Note: Annual averages are not yet available for 2008

Trends - Met EZ Unemployment Rate Criteria (>25% of State Unemployment Rate)								
	2001	2002	2003	2004	2005	2006	2006	2007
Archuleta	No	No	No	No	No	Yes	No	No
Dolores	Yes	Yes	Yes	Yes	Yes	No	Yes	Yes
La Plata	No	No	No	No	No	Yes	No	No
Montezuma	Yes	No	No	No	No	No	No	No
San Juan	Yes	Yes	Yes	Yes	Yes	No	No	No

Enhanced Rural Criteria > than 50% above state average (5.7%)

None eligible in 2007

**2: Per Capita Income (PCI) for each of the counties should be equal to or greater than the state PCI. Current Status** – All five counties had PCI levels less than the state average in 2006.

2006 Per Capita Income			* EZ Eligible	Objective 2
County	PCI	% of State	< \$29,618	> or = to State PCI
Archuleta	\$ 25,145	64%	Yes	No
Dolores	\$ 25,347	64%	Yes	No
La Plata	\$ 36,493	92%	No	No
Montezuma	\$ 28,547	72%	Yes	No
San Juan	\$ 30,096	76%	No	No
Colorado	\$ 39,491			

\*75% of State PCPI= \$29,618

Source: Bureau of Economic Analysis

Trends - Met EZ Per Capita Income Criteria*						
	2001	2002	2003	2004	2005	2006
Archuleta	Yes	Yes	Yes	Yes	Yes	Yes
Dolores	Yes	Yes	Yes	Yes	Yes	Yes
La Plata	No	No	No	No	No	No
Montezuma	Yes	Yes	Yes	Yes	Yes	Yes
San Juan	Yes	No	No	Yes	Yes	No

\* < 75% of State PCI

**3: Tourism, as measured by visitor counts at regional attractions such as the train (D&SNGRR) and Mesa Verde National Park, and the number of passengers at the Durango/La Plata County Airport should at least maintain and hopefully show a modest increase from year to year, using 2001 as a base year. Current Status** – The number of airport passengers is up 50%; train rider-ship is down 25%; and visitors to Mesa Verde N.P. are up 6%.

Year	Airport Passengers	Train Ridership	Mesa Verde Visitors
2000	90,947	206,729	471,156
2001	91,353	193,028	537,474
2002	102,963	129,690	419,661
2003	88,555	161,774	460,026
2004	95,555	167,096	469,705
2005	101,418	165,057	519,649
2006	113,387	165,916	577,366
2007	115,690	163,618	565,098
2008	136,665	143,858	567,550

**4: Each County will have an active economic development organization with staff and funding to focus efforts in each county and assist Region 9 EDD with its delivery of services. Current Status** – Each county has a functioning economic development group and three are designated as an EZ Contribution project.

**5: A newly defined objective is to increase the number of businesses that participate in the EZ in each county using 2005 as a base year. Current status** – Total number of participating businesses are down 10%.

<b>Number of Participating Businesses</b>				
	<b>2005</b>	<b>2006</b>	<b>2007</b>	<b>2008</b>
<b>Archuleta</b>	54	67	58	61
<b>Dolores</b>	25	21	19	13
<b>La Plata</b>	146	145	149	121
<b>Montezuma</b>	155	170	173	144
<b>San Juan</b>	1	3	1	1
<b>Total</b>	381	406	400	340



## ATTACHMENTS

### TAX CREDITS, INVESTMENTS AND JOBS CREATED 1992 – 2008

Region 9	Tax Credits	\$ Invested	Jobs Created
1992	\$ 296,371	\$ 9,308,523	754
1993	\$ 4,028,597	\$ 150,816,065	239
1994	\$ 1,294,222	\$ 51,877,827	284
1995	\$ 1,165,038	\$ 58,153,247	306
1996	\$ 895,713	\$ 102,398,577	258
1997	\$ 1,043,496	\$ 53,930,366	378
1998	\$ 636,946	\$ 34,995,455	420
1999	\$ 732,168	\$ 23,782,368	861
2000	\$ 694,510	\$ 22,033,763	852
2001	\$ 556,106	\$ 19,042,157	198
2002	\$ 1,105,638	\$ 38,382,161	251
2003	\$ 679,060	\$ 22,678,889	306
2004	\$ 821,390	\$ 29,056,316	207
2005	\$ 2,621,978	\$ 34,234,080	228
2006	\$ 1,178,243	\$ 40,975,300	356
2007	\$ 3,065,409	\$ 100,696,573	94
2008	\$ 56,474,008	\$ 1,818,843	317
	<b>\$ 77,288,892</b>	<b>\$ 794,180,510</b>	<b>6,309</b>

Archuleta County	Tax Credits	\$ Invested	Jobs Created
1992	\$ 18,159	\$ 606,795	0
1993	\$ 17,641	\$ 565,214	0
1994	\$ 7,782	\$ 452,069	12
1995	\$ 28,756	\$ 2,122,876	13
1996	\$ 39,641	\$ 2,069,787	6
1997	\$ 62,149	\$ 3,462,328	87
1998	\$ 108,003	\$ 7,439,508	143
1999	\$ 123,985	\$ 3,883,798	67
2000	\$ 129,526	\$ 4,317,457	230
2001	\$ 77,962	\$ 2,598,732	35
2002	\$ 126,316	\$ 4,212,593	66
2003	\$ 92,198	\$ 3,073,200	57
2004	\$ 91,093	\$ 3,036,366	63
2005	\$ 124,165	\$ 4,128,587	59
2006	\$ 259,417	\$ 6,979,529	77
2007	\$ 97,340	\$ 3,244,569	78
2008	\$ 91,765	\$ 3,497,200	-16
	<b>\$ 1,495,898</b>	<b>\$ 55,690,607</b>	<b>977</b>

<b>Dolores County</b>	<b>Tax Credits</b>	<b>\$ Invested</b>	<b>Jobs Created</b>
1992	\$17,728	\$567,699	0
1993	\$9,584	\$231,159	0
1994	\$19,190	\$699,761	0
1995	\$19,674	\$695,261	0
1996	\$9,373	\$333,026	1
1997	\$4,596	\$206,409	0
1998	\$6,655	\$289,692	3
1999	\$15,193	\$506,434	0
2000	\$17,549	\$588,121	16
2001	\$12,775	\$872,714	0
2002	\$9,751	\$325,064	0
2003	\$12,260	\$408,710	2
2004	\$10,878	\$362,592	2
2005	\$27,614	\$920,432	5
2006	\$14,250	\$475,008	1
2007	\$17,859	\$595,281	1
2008	\$19,679	\$655,917	6
	<b>\$244,608</b>	<b>\$8,733,280</b>	<b>37</b>

<b>La Plata County</b>	<b>Tax Credits</b>	<b>\$ Invested</b>	<b>Jobs Created</b>
1992	\$139,128	\$5,126,751	721
1993	\$3,866,116	\$144,450,937	152
1994	\$1,000,636	\$39,667,472	158
1995	\$858,235	\$40,807,195	142
1996	\$598,061	\$30,888,593	150
1997	\$753,271	\$41,594,811	244
1998	\$361,209	\$21,703,180	197
1999	\$401,109	\$13,045,328	651
2000	\$297,375	\$9,047,222	378
2001	\$212,448	\$7,109,509	154
2002	\$563,711	\$20,056,401	68
2003	\$347,427	\$11,723,628	191
2004	\$521,152	\$19,073,788	101
2005	\$2,209,649	\$20,701,042	102
2006	\$589,221	\$23,285,594	207
*2007	\$1,148,600	\$38,274,052	-86
2008	\$1,227,665	\$40,435,160	329
	<b>\$15,095,012</b>	<b>\$526,990,663</b>	<b>3,859</b>

<b>Montezuma County</b>	<b>Tax Credits</b>	<b>\$ Invested</b>	<b>Jobs Created</b>
1992	\$120,516	\$2,979,288	33
1993	\$135,256	\$5,453,929	87
1994	\$266,614	\$11,058,525	114
1995	\$258,373	\$14,527,915	151
1996	\$248,188	\$68,996,390	101
1997	\$220,279	\$7,753,781	51
1998	\$161,071	\$5,563,075	83
1999	\$191,655	\$6,339,287	141
2000	\$246,859	\$7,974,262	228
2001	\$249,974	\$8,362,063	5
2002	\$265,923	\$9,123,539	103
2003	\$224,202	\$7,473,351	56
2004	\$188,543	\$6,259,423	33
2005	\$259,019	\$8,432,978	62
2006	\$309,673	\$10,081,096	72
2007	\$1,711,610	\$55,582,671	88
2008	\$471,092	\$11,597,632	-3
	<b>\$5,528,846</b>	<b>\$247,559,205</b>	<b>1,404</b>

<b>San Juan County</b>	<b>Tax Credits</b>	<b>\$ Invested</b>	<b>Jobs Created</b>
1992	\$840	\$27,990	0
1993	\$0	\$0	0
1994	\$0	\$0	0
1995	\$0	\$0	0
1996	\$450	\$20,761	0
1997	\$3,201	\$913,037	4
1998	\$0	\$0	0
1999	\$226	\$7,521	2
2000	\$3,201	\$106,700	0
2001	\$2,974	\$99,138	4
2002	\$6,714	\$223,796	2
2003	\$2,973	\$0	0
2004	\$9,724	\$324,147	9
2005	\$1,531	\$51,042	0
2006	\$1,804	\$24,762	0
2007	\$90,000	\$3,000,000	14
2008	\$8,642	\$288,098	1
	<b>\$132,280</b>	<b>\$5,086,992</b>	<b>36</b>

## **SOUTHWEST ENTERPRISE ZONE PROJECTS 2008**

1. Archuleta County Economic Development Association  
Contact: Bart Mitchell, 970-731-1443  
Date Project First Approved: January 20, 1994  
Promotes economic development in Archuleta County.
2. Archuleta County Job Training (Education Center)  
Contact: Dr. Don Goodwin, 970-264-2835  
Date Project First Approved: October 10, 1996  
Provides employment training
3. Boys & Girls Club of La Plata County  
Contact: Eileen Wasserbach 970-563-4517  
Date Project First Approved: May 10, 2007  
Provides youth development and job training
4. Colorado Housing Inc.  
Contact: Julie Simmons, 970-264-6950  
Date Project First Approved: July 13, 2006  
Provides self-help affordable housing
5. Cornerstone, Community Radio Project  
Contact: Jeff Pope, 970-564-9727  
Date Project First Approved: May 8, 2008  
Infrastructure project to purchase and renovate Basin Industrial Bank Building in Cortez
6. Dolores Community Center  
Contact: Ed Merritt Jr.  
Date Project First Approved: November 8, 2007  
Infrastructure project for Community Center and community kitchen
7. Dolores County Development Corporation  
Contact: Dan Fernandez, 970-677-2283  
Date Project First Approved: March 11, 2003  
Community development project to set up Dolores County Business Park
8. Dove Creek Community Health Clinic  
Contact: Dianne Smith, 970-677-2291  
Date Project First Approved: March 20, 2001  
Provides primary medical care to Dolores County residents, many of whom do not have health insurance.
9. Dr. Mary Fisher Medical Foundation  
Contact: Kelly Johnson, 970-731-9545  
Date Project First Approved: March 20, 2001  
Provides medical care to Archuleta County residents unable to afford health insurance
10. Durango Adult Education Center, Inc.  
Contact: Paulette Church, 970-385-4354  
Date Project First Approved: July 21, 2003  
Community development project

11. Durango Arts Center  
Contact: Leah Sheley  
Date Project first Approved: Jan. 2008  
Community development project
12. Durango Discovery Museum  
Contact: Annie Pollet, 970-422-2034  
Date Project First Approved: July 21 2003  
Community development project
13. Durango Public Library  
Contact Person: Sherry Tabor, 970-375-3389  
Date Project First Approved: May 10, 2007  
Community infrastructure project
14. Fort Lewis College Foundation  
Contact Person: Margaret Gray, 970-247-7177  
Date Project First Approved: September 12, 2007  
Community infrastructure project
15. Habitat for Humanity of La Plata County  
Contact Person: 970-382-9930  
Date Project First Approved: September 12, 2007  
Affordable housing project
16. Housing Solutions for the Southwest  
Contact Person: Kim Welty, 970-259-1086  
Date Project First Approved: March 12, 2008  
Project provides technical assistance services to reduce homelessness
17. La Plata Community Development Corporation  
Contact Person: Reid Ross, 970-247-1436  
Date Project First Approved: July 13, 2006  
Provides land for affordable housing projects
18. La Plata Economic Development Action Partnership  
Contact: Jack Llewellyn, 970-259-1700  
Date Project First Approved: August 8, 2000  
Economic development marketing
19. Mancos Public Library  
Contact: Patsy Smith, 970-533-7569  
Date Project First Approved: March 8, 2007  
Provides cultural and economic benefit to Mancos Valley region
20. Mercy Health Foundation  
Contact: Karen Midkiff, 970-764-2800  
Date Project First Approved: September 28, 1995  
Provides medical care to needy county residents, capital, construction & program costs for facilities
21. Mountain Studies Institute  
Contact Person: Koren Nydick, 970-247-7071  
Date Project First Approved: September 12, 2007  
Construction and economic benefit project

22. Pinon Project

Contact: Virginia Howey, 970-564-1195  
Date Project First Approved: May 10, 2007  
Job training and workforce programming

23. San Juan 2000 (San Juan County Development Association)

Contact: Karen Hoskin, 970-387-5101  
Date Project First Approved: November 16, 1998  
Provides Job retention and creation

24. San Juan Symphony

Contact Person: Kathy Myrick, 970-382-9753  
Date Project First Approved: September 12, 2007  
Community enhancement project

25. Southwest Colorado Mental Health Center

Contact: Bernard Heath, Jr., Ph.D., 970-259-2162  
Date Project First Approved: January 20, 2004  
Construction of Acute Treatment Unit/Triage/Detox Facility

26. Southwest Conservation Corps

Contact Person: Harry Bruell, 970-259-8607  
Date Project First Approved: March 9, 2006  
Provides job training

27. Southwest Memorial Hospital Foundation

Contact: Wendy Weygandt, 970-564-2156  
Date Project First Approved: January 20, 2004  
Provides medical care to Montezuma and Dolores Counties residents, unable to afford health insurance

28. SW Zone Marketing/Administration (Region 9 EDD)

Contact: Ed Morlan, 970-247-9621  
Date Project First Approved: October 1, 1989  
Provides economic development in five counties in SW Colorado and Administrator for Southwest EZ

Please note - Region 9 EDD is the sponsoring and managing agent for the following projects:

a. Southwest Small Business Development Fund

Contact: Ed Morlan, 970-247-9621  
Date Project First Approved: April 1, 2002  
Provides business assistance

b. Southwest Workforce Center Training Fund

Contact: Ed Morlan, 970-247-9621  
Date Project First Approved: November 7, 2001  
Provides employment training

29. Valley Wide Health Services

Contact: Peggy Micklich, 719-589-5161  
Date Project First Approved: March 22, 2001  
Provides medical care to residents of Southwest Colorado, unable to afford health care

30. Volunteers of America – Colorado Branch

Contact: John Gamble, 970-259-1021  
Date Project First Approved: January 18, 1996  
Southwest Safehouse: A safehouse for victims of abuse  
Durango Community Shelter: Shelter for the homeless.

## ENTERPRISE ZONE CONTRIBUTION PROJECTS

	County	Direct Contribution	In Kind Contribution	Total
<b>Archuleta County Education Ctr</b>	Archuleta	\$ 16,835.00	\$ -	\$ 16,835.00
<b>AEDA</b>	Archuleta	\$ 33,600.00	\$ 6,000.00	\$ 39,600.00
<b>Adult Ed Ctr of Durango</b>	La Plata	\$ 16,613.23	\$ 4,669.20	\$ 21,282.43
<b>Boys &amp; Girls Club of LPC</b>	La Plata	\$ 77,990.00	\$ 253,060.00	\$ 331,050.00
<b>Cornerstone Community Radio</b>	Montezuma	\$ 22,000.00		\$ 22,000.00
<b>Colorado Housing Inc.</b>	Archuleta	\$ 2,081.37	\$ 8,750.44	\$ 10,831.81
<b>Children's Museum/Dgo Dis.</b>	La Plata	\$ 172,444.24	\$ 158,113.90	\$ 330,558.14
<b>Durango Arts Center</b>	La Plata	\$ 146,111.00	\$ 17,216.08	\$ 163,327.08
<b>Dolores Community Center</b>	Montezuma	\$ 24,475.00	\$ -	\$ 24,475.00
<b>Dove Creek Health Clinic</b>	Dolores	\$ 250.00	\$ 517.50	\$ 767.50
<b>Durango Public Library</b>	La Plata	\$ 152,013.06	\$ 231,429.56	\$ 383,442.62
<b>Fort Lewis College Found.</b>	La Plata	\$ 469,199.00	\$ -	\$ 469,199.00
<b>Habitat for Humanity</b>	La Plata	\$ 700.00	\$ -	\$ 700.00
<b>Housing Solutions for the SW</b>	regional	\$ -	\$ 3,159.77	\$ 3,159.77
<b>La Plata Eco. Partnership</b>	La Plata	\$ 43,500.00		\$ 43,500.00
<b>Mercy Health Foundation</b>	La Plata	\$1,437,088.81	\$ 136,616.25	\$1,573,705.06
<b>Dr. Mary Fisher Medical Found.</b>	Archuleta	\$ 57,065.00	\$ 74,232.22	\$ 131,297.22
<b>Mancos Public Library</b>	Montezuma	\$ 109,050.00	\$ -	\$ 109,050.00
<b>Mountain Studies Institute</b>	San Juan	\$ 59,604.54	\$ 1,580.81	\$ 61,185.35
<b>Pinon Project</b>	Montezuma	\$ 9,500.00	\$ -	\$ 9,500.00
<b>Region 9</b>	regional	\$ 7,550.00	\$ 33,201.25	\$ 40,751.25
<b>Southwest CO Mental Health</b>	regional	\$ 3,583.50	\$ -	\$ 3,583.50
<b>San Juan Development Assoc.</b>	San Juan	\$ 500.00	\$ 547.50	\$ 1,047.50
<b>San Juan Symphony</b>	La Plata	\$ 62,697.90	\$ 41,692.04	\$ 104,389.94
<b>Southwest Memorial Health</b>	Montezuma	\$ 20,244.50	\$ 1,585,923.48	\$1,606,167.98
<b>Southwest Conservation Corps</b>	La Plata	\$ -	\$ 16,930.50	\$ 16,930.50
<b>Volunteers of America</b>	La Plata	\$ 129,621.24	\$ 9,290.83	\$ 138,912.07
<b>Valley Wide Health Services</b>	La Plata	\$ -	\$ 34,245.32	\$ 34,245.32
<b>Totals</b>		\$3,074,317.39	\$ 2,617,176.65	\$5,691,494.04